

Look closely or you might not see the village for the trees.



Surrounded by a beautiful forest, the Village of Coldstream is indeed a village. A New England look, mixing stone, brick and clapboard siding, carriage lights, tree-shaded streets, rich landscaping.

A private, special place. Secluded, but so convenient. In the acclaimed Forest Hills School District and only minutes from I-275 and Beechmont area shopping.

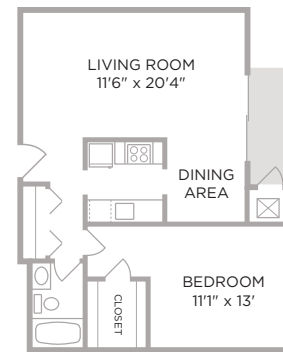
One and two bedroom apartment homes. Two and three bedroom townhomes. Outstanding, spacious, free-flowing floor plans with lots of windows. Generous closet space. Fully-equipped kitchens. Washer/dryer hook-ups in the townhomes. And large private patios or balconies viewing the surrounding woods.

Plus, a wonderful amenity package including a 24-hour fitness center, tennis courts,

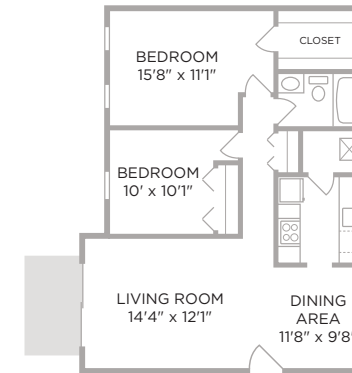
volleyball, basketball, a picnic grove, a children's playground and a delightful pool with separate children's wading pool.

But remember ... look closely or you might not see the Village for the trees. Designed, built and managed by Towne Properties, the Village of Coldstream is indeed a *Great Place to Live*®.

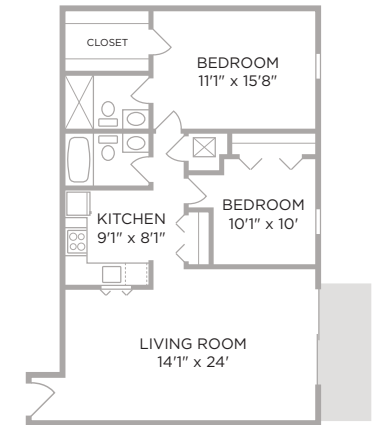
Floorplans



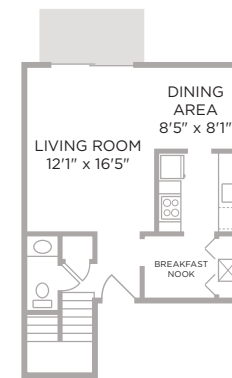
The Andover
1 Bedroom / 1 Bath / 684 sq. ft.
\$



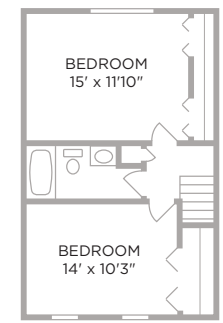
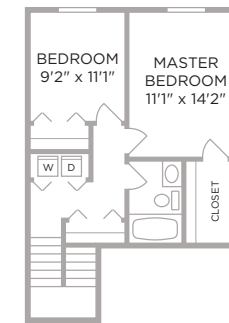
The Bristol I
2 Bedroom / 1 Bath / 836 sq. ft.
\$



The Bristol II
2 Bedroom / 2 Bath / 971 sq. ft.
\$



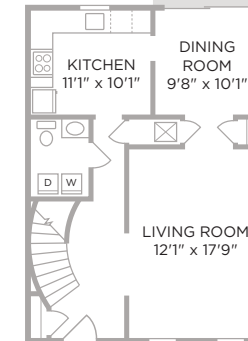
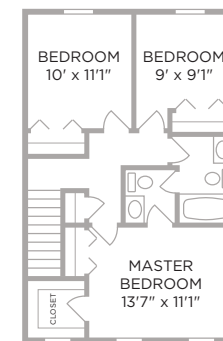
The Cape
2 Bedroom / 1½ Bath / 971 sq. ft.
\$



The Danforth
2 Bedroom / 1½ Bath / 971 sq. ft.
\$



The Essex
3 Bedroom / 1 and two ½ Bath / 1200 sq. ft.
\$



The Fairfax
3 Bedroom / 2½ Bath / 1300 sq. ft.
\$

